

TECHNICAL DATA

Technical data may be updated at any time. It is the users responsibility to check data validity by reference to the website or Nuplex Construction Products

MANUAL SECTION	ISSUE DATE	AUTHORISED	REPLACES	PAGE
----------------	------------	------------	----------	------

Vinyl Tile	July 2007	PM	New	1 of 7
------------	-----------	----	-----	--------

Vinyl Tile Collection: Thru Quartz & Cortina Classic

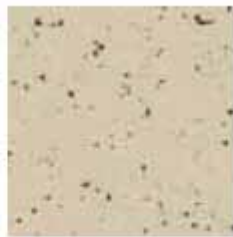
1.0 Thru Quartz Vinyl Tile



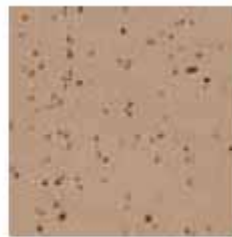
TQ304-3 White



TQ290-3 Canvas



TQ217-3 Cornsilk



TQ289-3 Toast



TQ284-3 Smoke



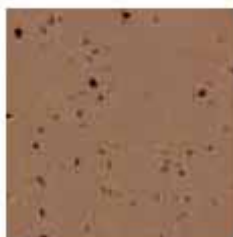
TQ223-3 Platinum



TQ297-3 Blue Gray



TQ220-3 Dusty Green



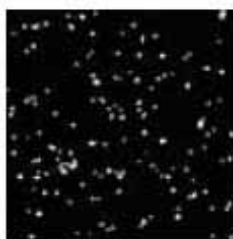
TQ291-3 Camel



TQ288-3 Pewter



TQ224-3 Warm White



TQ300-3 Black



Product: Thru Quartz & Cortina VCT Tile

Size: 305 x 305 mm x 3.2mm thick

Colours: Full range

This solid color tile (Thru Quartz) is accented with a virtually non-directional pattern of minute chips extending through the thickness of the tile.

These chips do not protrude ensuring a smooth surface that will take a full polish system

2.0 Cortina Classic , Smooth Finish



V-890 Antique White



V-913 Light Moves



V-873 Sand Dune



V-824 Sesame



V-957 Fieldstone



V-603 Buff



V-423 Autumn Haze



V-874 Desert Haze



V-984 Elemental



V-986 Baked Earth



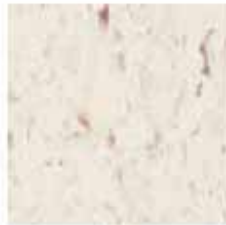
V-988 Spicenut



V-606 Toasted Cinnamon



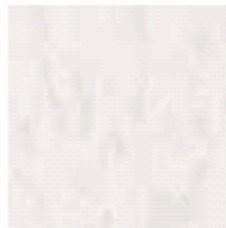
V-622 Mocha



V-780 Sunburst



V-863 Sand Drift



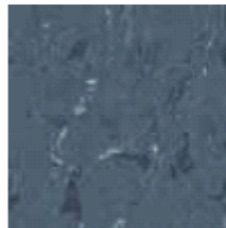
V-626 Silver Dust



V-312 White Tracery



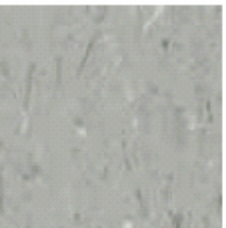
V-858 Pewter Gray



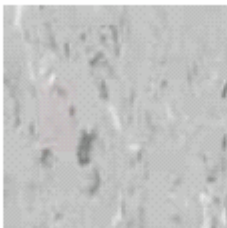
V-968 Evening



V-310 Midnight



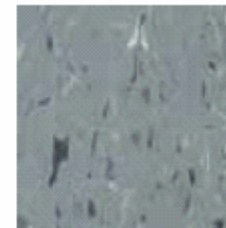
V-866 Shale Gray



V-960 Silver Plum



V-618 Platinum



V-962 Greyhound



V-628 Sangria



V-620 Brick



V-623 Coral Reef



V-976 Bronze Tan



V-608 Hype



V-885 Honey



V-982 Maple Sugar



V-619 Saffron



V-627 Dusty Purple



V-604 Morning Glory



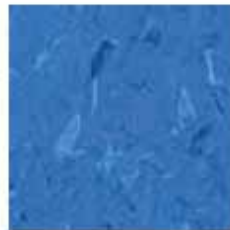
V-781 Rainbow



V-609 Iceberg



V-923 Geneva Blue



V-927 True Blue



V-887 Denim



V-931 Sage White



V-613 Pistachio



V-857 Teal Mist



V-601 Country Olive



V-610 Emerald



V-605 Butternut



V-987 Brazilia



V-614 Granny Smith



V-785 Cirrus



V-789 Windrift



V-914 Canvas Tan



V-602 Natural Moon



V-617 Amethyst



V-786 Cloudburst



V-607 Pecan Pie



V-985 Earthenware



V-616 Lagoon



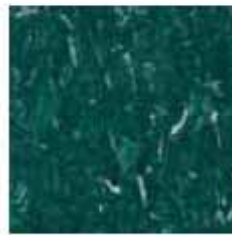
V-615 Spearmint



V-625 Rosette



V-951 Red Pepper



V-871 Rainforest



V-938 Balsam



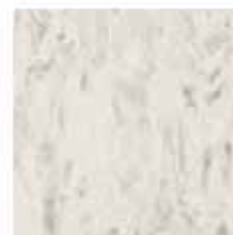
V-621 Pomegranate



V-624 Sunrise



V-787 Stratus



V-862 Cloud White

1. Installation:

SURFACE PREPARATION

1.1 A flat, smooth, sound substrate is essential to long-term performance of the tiles.

1.2 **Concrete**

Concrete floors are the normal substrate for vinyl tiles. Any of the treatments below may be required.

1.2.1 Grind the concrete as required to remove lumps, high points, loose material etc.

1.2.2 Apply Nuplex smoothing compounds to remove surface undulations (refer individual data sheets).

- Durabond Superfine FLC (or Matrix) is a two part levelling compound proven to be an excellent sub-base for tiles. It provides simple but high specific adhesion to the concrete. Once dry, disk sand to remove bits and trowel marks.
- Superflo is a Nuplex self-levelling screed. Normally applied at 5mm this screed will give a flat, smooth surface. In larger areas, this needs to be applied by a specialised team.
- Ultrafinish is a low-film builder smoothing/finishing compound to take out any final dents or fine cracks. On good concrete floors, it is used as the only smoothing compound.

1.2.3 **Concrete Joints and Construction Joints**

It is almost inevitable that some cracking of tiles over these joints will occur. This will depend on the age and dryness of the concrete and the degree of completeness of the concrete shrinkage. If shrinkage is complete, cracking can be reduced by proper joint treatment using **NUPLEX K130** epoxy joint filler. If shrinkage is incomplete or uncertain then the only option is to use a non-shrink grout such as **NUPLEX Superset**. Application of Durabond or Matrix is not recommended as these products exhibit high shrinkage in joints and do not provide a crack-free fill. **Plan** laying so that one **cut** tile covers the joint. This means only one tile needs to be replaced and that the cut tile width can be changed if the slab moves.

1.2.4 **Waterproofing**

If the concrete is new, wet or rising moisture is exhibiting, then waterproofing must occur. Tiles (or any other floorcoverings) do not perform under rising moisture situations. Once jointing is complete, use **AQUAGUARD 101** to fully waterproof the floor.

Apply two coats at 3m²/litre/coat (refer full data). Aquaguard 101 must be laid directly on the concrete slab and floor smoothing compounds are to be laid **over** it.

Do **not** use any flexible waterproofing compounds under vinyl tiles.

Do **not** use moisture vapour control agents. Aquaguard 101 controls both liquid water and water vapour.

2. **Composite Sheets**

Vinyl tiles can be laid onto particle board, plywood, Masonite, hardboard. Tiles are likely to crack on sheet joints. If possible, plan to lay tiles up to the sheet joint.

3. **Old Vinyl Tiles**

It is possible to lay new vinyl tiles over old. It is solely the users responsibility when this occurs. The old tiles should be clean, free of polishes and well bonded.

Use Super 7 adhesive to bond. As the old tiles are impervious, the adhesive water content will not readily dry out. In this instance, partially allow the adhesive to dry before laying tiles.

Existing Sheet Vinyl

Remove existing sheet vinyl from service to retail area.

4. **TILE INSTALLATION**

4.1 Once substrate preparation is complete, it is relatively simple to obtain a perfect floor.

4.2 Ensure access onto the prepared substrate is limited during this stage. Any small contaminated particle will show up through tiles.

4.3 Apply a centre chalk line and lay tiles from this line.

4.4 **Adhesive**

Nuplex Super 7 Coverage rate: 10m²/litre

4.5 **Application**

Adhesives are applied using a fine notched vinyl trowel.

EG: Versablade FFA Resilient Switchblade

Note: It is the contractor's responsibility to apply the correct meterage of adhesive. Excessive adhesive may result in tiles cracking.

It is absolutely essential that these notchings are used. Notches placed too far apart, or too high will lead to tile cracking.

Apply the adhesive to the floor. Carefully avoid leaving coarse adhesive lines at trowel ends.

Lay the tile into the wet adhesive. Lay the area with tiles and roll with a vinyl floor roller eg: 100 pounds Roberts 10-952. This is a minimum weight and heavier rollers would be advantageous eg add the 50lb optional weight to this roller.

Lay adhesive in adjacent areas, lay tiles and roll as above. Continually go back over larger, completed areas and roll as one area.

In one period, complete to pre-defined finishing lines. **Remove** all adhesive that has not been laid into. These unlaid areas can cause cracking problems when overlaid.

Remove any wet adhesive that has come up joints during the installation/rolling process.

- 4.6 Complete the installation and seal tiles. Sealing immediately is important as tiles are porous and will stain if the surface is not sealed.

4.7 **Wet Areas**

Wet areas are those subject to water ingress from **above** eg: around freezers, chillers, wine shelves and wet food. Normal adhesives are affected by continuous water, will go white and fail.

A waterproof adhesive is **NUPLEX TRUSTIK EA**, a two part, flexible epoxy adhesive. **Mix well** according to the instructions. Apply at 5m²/litre and apply using the same trowels as in 4.5. This epoxy should be applied directly to the concrete or Aquaguard 101. It is **absolutely** essential to roll with the 100 pound roller (or heavier) prior to the adhesive setting (within 60 minutes of mixing). As a more rigid adhesive, it will cause the tiles to crack if the adhesive is not rolled flat to fully support the back of the tile.

This adhesive cures overnight. Seal as before.

5. **WARRANTIES**

The products are fully warranted to their specifications by the manufacturer. A five year installation warranty is co-provided by Nuplex and the contractor/installing company. This is in written format and is co-signed.