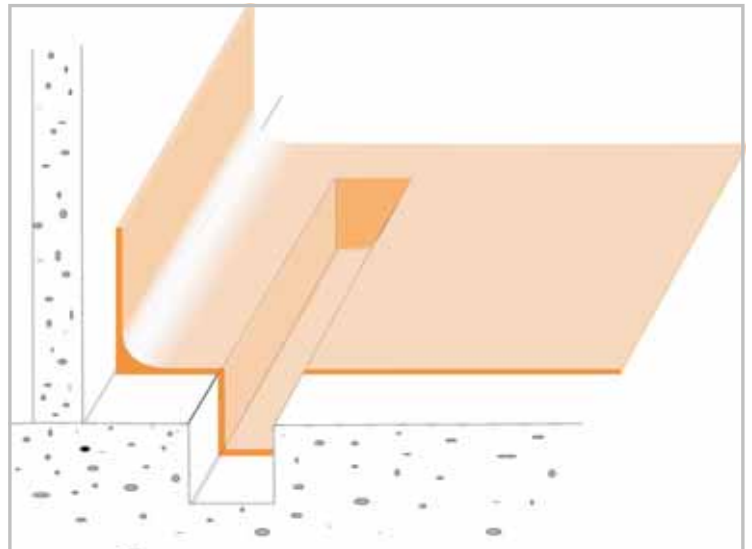


Properties comparison chart

Properties	Sureshield or Industrial Terrazzite, Decorative Terrazzite	Nuthane SB	Surechem VE	Supascreed	RapidFloor MMA
Description	Hard wearing, chemical resistant, monolithic, 8-9mm thick resin floor topping.	Hard wearing, chemical resistant, monolithic, 6.5mm thick resin floor topping.	Hard wearing, chemical resistant, monolithic, 6mm thick resin floor topping.	Hard wearing, chemical resistant, monolithic, 6mm thick resin floor topping.	Medium wearing 3mm floor topping
Resin Type	Polyester; low emission	Polyurethane	Vinyl Ester	Epoxy	MMA
Nominal Thickness	8-9mm Sureshield 6mm Terrazzite	Std. 6mm 4,6 or 8mm	6mm min	6mm, or 3 to 6mm	2-3mm
Abrasion Resistance ASTM H22 abrasive wheels, 1kg load	1000 cycles. Abrasive wear index 68	1000 cycles. Abrasive wear index 75	1000 cycles. Abrasive wear index not tested	1000 cycles. Abrasive wear index not tested	N/A
Temperature ranges Installation: In-service:	+10°C -30°C to +90°C	+10°C -30°C to +90°C	+10°C -30°C to +100°C	+10°C -30°C to +65°C	-20°C -30°C to +65°C
Absorption (ASTM D570)	0.047%	0.04%	0.04%	0.04%	N/a, low
Chemically Resistant	Yes, refer to chemical resistance chart	Yes, refer to chemical resistance chart	High, Yes, refer to chemical resistance chart	Yes, refer to chemical resistance chart. Lower	Yes
Permeability NZS2130	No measurable permeability	No measurable permeability	No measurable permeability	No measurable permeability	No measurable permeability
Non-slip, wet	Steel Float: 0.46 Glass Float: 0.58 Aggregate: 0.73	Non-slip	Non-slip	Non-slip	Non-Slip
Minimum time into service	12hrs / 4hrs light duty	12hrs / 6hrs light duty	12hrs / 4hrs light duty	24hrs / 8hrs light duty	3-4hrs
Thermal Shock Resistance	Excellent	Excellent	Excellent	High	High
Application to damp surfaces	No	Yes	No	Yes	Medium
Odour during Installation	Yes	No	Yes	No	Yes
Colour	Natural gold or may be tinted or blended with coloured aggregates	Solid colours: Red, Tan, Yellow, Grey, green	Natural Gold	Natural gold or may be tinted or blended with coloured aggregates	Various
Control Joints	1. C81 non-control joints 2. K130 epoxy for control joints	1. C81 non-control joints 2. K130 epoxy for control joints	1. C81 non-control joints 2. K130 epoxy for control joints	K130 epoxy	K130 Epoxy
Application Process	Primer + Trowelled screed + Topcoat	Slurry Screed + topcoat	Primer + Trowelled screed + Topcoat	Primer + Trowelled screed + Topcoat	Primer + Rolled base / Broadcast & topcoat
Coves	Yes, integral part of trowelling process	Must be pre-formed in other resin base; eg Supascreed	Yes, integral part of trowelling process	Yes, integral part of trowelling process	Must be pre-formed in other resin base; eg Supascreed
Cost / m²; approx.	\$100	\$120	\$135	\$110	\$90 but thin topping



Installation Applicators

The installation should be carried out by a Nuplex Contractor Federation Applicator.



For full contractor details please visit our web site: www.nuplexconstruction.co.nz

Model Specification:-

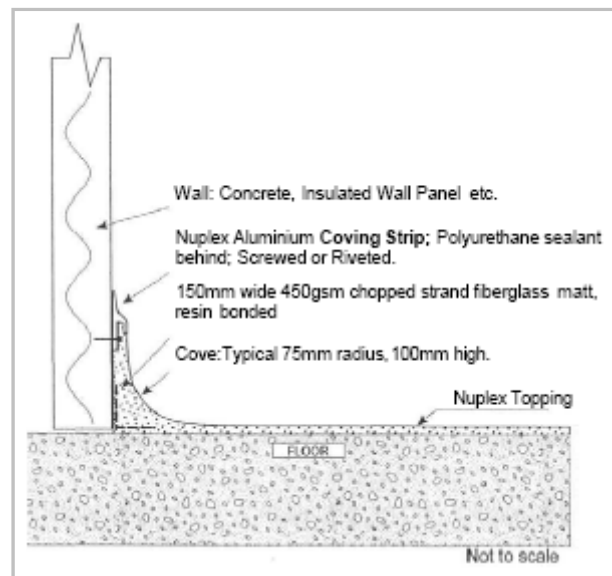
- Product:** Sureshield, Nuthane SB, Surechem VE, Supascreed - delete one.
- Finish:** Medium Texture / Heavy Texture (delete as appropriate)
- Thickness:**mm (4mm 6mm 8mm) (insert as appropriate)
- Colour:** Natural, Red, Green, Grey, Tan. (insert as appropriate)
- Preparation:** All preparation to be carried out in accordance with specific Nuplex instructions.

Supplier: Nuplex Construction Products
Tel 09 580 0883

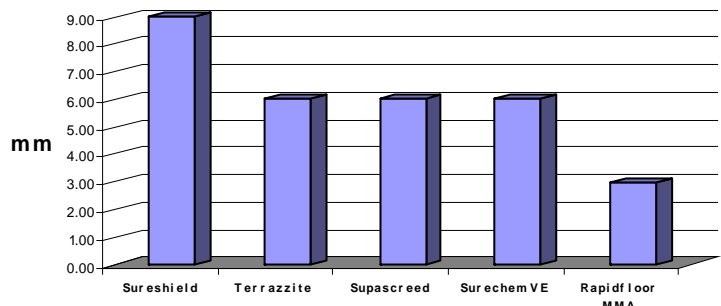
Products: Select resin system components from individual techdata sheets.

Nuplex floor toppings fulfil every part of the resin flooring range. Installation detailing is on the website.

Nuplex resin systems are applied by trowel or slurry & broadcast methods to the horizontal areas. The verticals, coves and drains, are formed in trowel-able resins. Then all horizontal and vertical areas are topcoated .



Floor Toppings



Slip & Durability Statement For Compliance with NZ Building Code

The products systems and application of Nuplex Resin Systems comply with the requirements of the NZ Building Industry Authority and related acts.

In particular two items of key importance are complied with. These are **slip resistance** and **durability, of the Building regulations D1 & B2..** The warranties implied by the durability code are accepted and complied with. The factors required by the slip resistance code are also complied with except as outlined in specifications and technical data. **E3 Internal water** also applies if the toppings are used for internal floors above structures.

This specification is to be read in conjunction with relevant product information, technical data, material safety data sheets etc, and conditions of contract which may be issued by the client.