



the future is safer with altro

Altro XpressLay™ contains recycled content

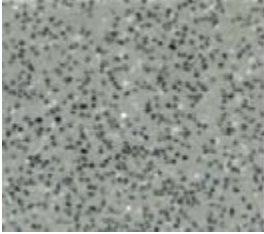
Altro XpressLay™ Adhesive-free safety flooring

Safety Flooring

Altro is the first safety flooring manufacturer to recycle traditional safety flooring in-house

A+ BRE Generic Green Guide Rating for Safety Flooring. full details available at www.thegreenguide.org.uk

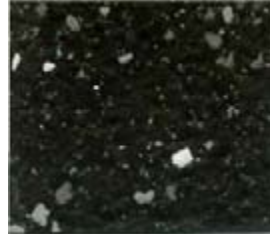
All Altro safety flooring contains recycled content



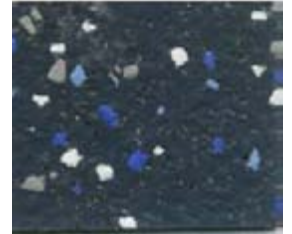
Fog XL22153
WR81 / A1M81 / LRV27



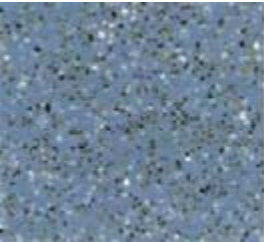
Black XL22892
WR100 / A1M100 / LRV6



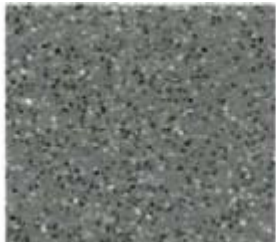
Space XLI22003
WR100 / A1M100 / LRV7



Blueberry XLI22002
WR231 / A1M73 / LRV 11



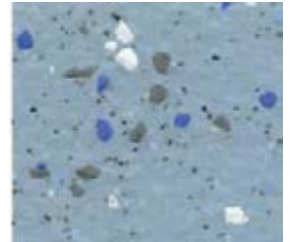
Blue XL22412
WR71 / A1M71 / LRV 22



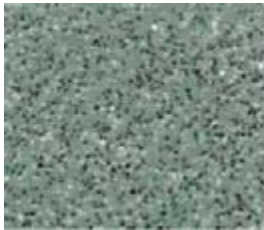
Dolphin XL2210
WR86 / A1M86 / LRV21



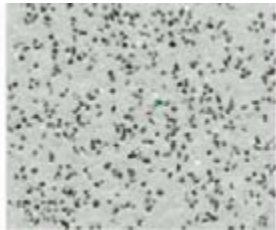
Granite XLI22006
WR83 / A1M83 / LRV 14



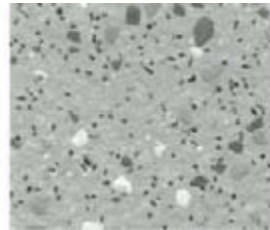
Lake XLI22005
WR245 / A1M203 / LRV 30



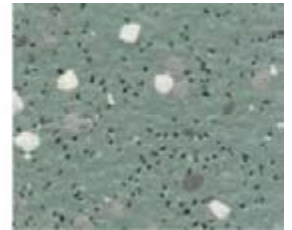
Skyline XL22332
WR52 / A1M52 / LRV 24



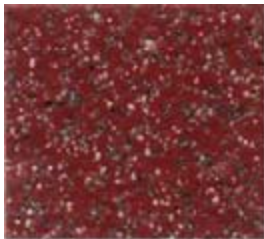
Cloud XL2214
WR79 / A1M191 / LRV 41



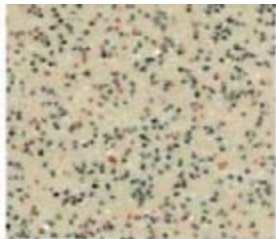
Rhino XLI22009
WR04 / A1M85 / LRV 35



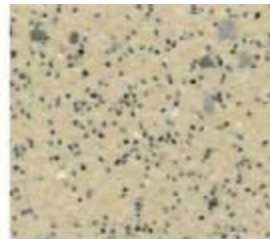
Herb XLI22008
WR52 / A1M52 / LRV 24



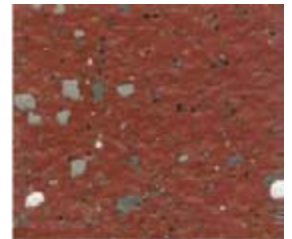
Cherry XL22920
WR148 / A1M148 / LRV 10



Bone XL22215
WR20 / A1M20 / LRV37



Sahara XLI22004
WR20 / A1M20 / LRV38



Dragon XLI22001
WR251 / A1M238 / LRV 11

For the warranty to be valid Altro XpressLay™ must be used with the approved adhesive tape supplied

Exact material match with samples cannot be guaranteed.



Coffee XLI22007
WR63 / A1M239 / LRV 22

www.altro.com



Altro XpressLay™

Adhesive-free safety flooring

Flooring Type		EN 13845/ EN 13553	Safety flooring
Classification for use		EN 685	34 & 43
Slip Resistance		TRRL EN 13845 EN 13893 DIN 51130	> 36 ESf DS R10
Thickness		EN 428	2.2 mm
Wear Layer		EN 429	0.8mm
Flexibility		EN 435	Pass
Weight		EN 430	2.6 kg/m ²
Roll Dimensions		EN 426	2.0m x 20.00m - 40m ²
Light Fastness		EN 20105-B02	>6
Wear Resistance		EN 13845	< 10% particles lost over 50000 Cycles
Indentation		EN 433	< 0.10mm
Fire Performance		EN 13501-1 EN ISO 9239-1 EN ISO 11925-2	Class Bfl-s1>8kW/m ² Pass
Chemical Resistance		EN 423	Good
Castor Chair Abrasion		EN 425	Pass
Under floor heating		EN 12667	Suitable
Electrical Behaviours		EN1815	< 2kV Antistatic
VOC Emissions		prEN 1052 Section 01350	Low/Pass



*For wet areas where barefoot slip resistance is required such as showers and swimming pool surrounds, see Altro Marine™ 20/T20. Please also refer to local building regulations/codes of practice.

** Caution Ketone/Aromatic Solvents, Please contact Altro™ for further technical advice regarding staining and chemical resistance.

Contains Biocide.

Installation and Maintenance

Altro XpressLay is loose laid with all joints and perimeters adhered to the sub floor with Altro LooseLay double sided tape. Altro XpressLay should be installed in accordance with Altro XpressLay fitting instructions and local codes of practice. Please refer to Altro Cleaning Card for maintenance advice. Failure to install and maintain Altro flooring in accordance with installation instructions can affect its performance and slip resistance. Floors should be protected from other trades and thoroughly cleaned before handover.



For further technical information please visit www.altro.com

