



Altro Walkway™ 20 / VM20

Safety Flooring

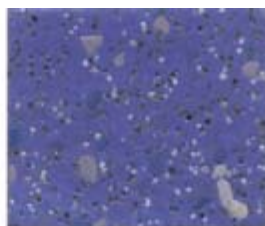
Now including 10 NEW chipped colours



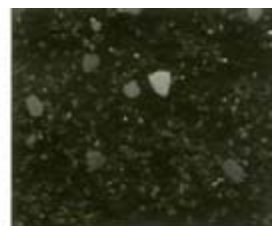
Black VM20892
WR100 / A1M100



Fog VM20153*
WR81 / A1MB1



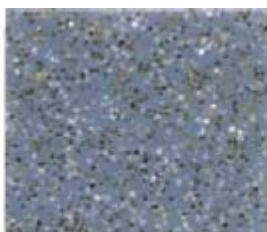
Lupin VM12059
WR/A1Mto be confirmed



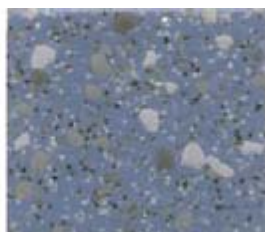
Coal VM12058
WR100 / A1M100



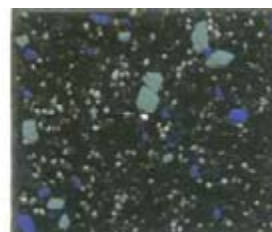
Midnight VM20421
WR72 / A1M72



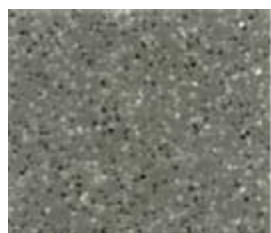
Blue VM20412
WR71 / A1M71



River VM12057
WR71 / A1M71



Nightfall VM12056
WR72 / A1M72



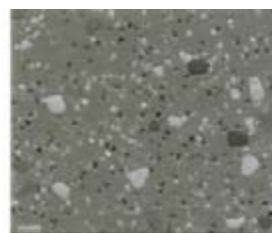
Dolphin VM2010
WR86 / A1M86



Cloud VM2014
WR79 / A1M191



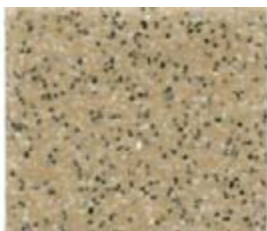
Blizzard VM12055
WR79 / A1M191



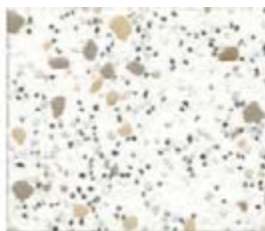
Whale VM12054
WR86 / A1M86



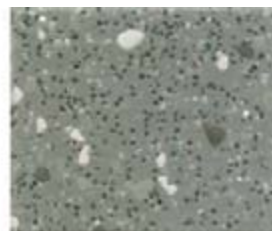
Skyline VM20332
WR52 / A1M52



Biscuit VM20907
WR146 / A1M20



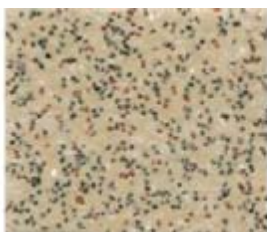
Winter VM12053
WR105 / A1M1



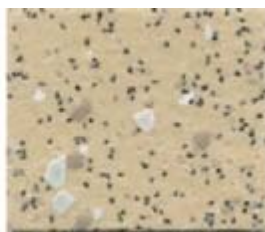
Tarragon VM12052
WR52 / A1M52



Tundra VM20910
WR153 / A1M239



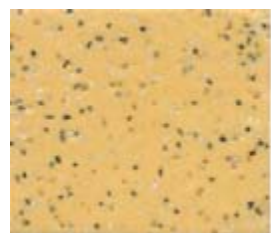
Bone VM20215
WR20 / A1M20



Sand VM12051
WR20 / A1M20



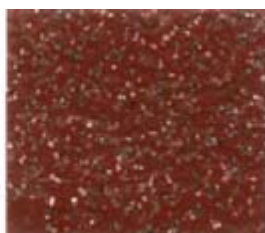
Savannah VM12050
WR153 / A1M239



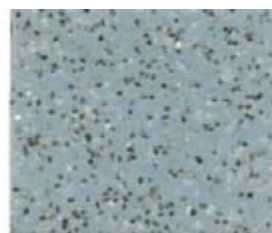
Canary VM2030
WR247 / A1M247



Tango VM2031
WR42 / A1M42



Cherry VM20920
WR148 / A1M148



Waterfall VM20912
WR155 / A1M135

* SD version available, product code VM20153SD. For Light Reflectance Values visit www.altro.com

Exact material match with samples cannot be guaranteed

the future is safer with altro










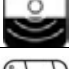




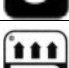
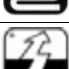

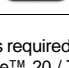
Altro is the first safety flooring manufacturer to recycle traditional safety flooring in-house

www.altro.com

A+ BRE Generic Green Guide Rating for Safety Flooring, full details available at www.thegreenguide.org.uk



Altro Walkway™ 20 / VM20 Safety Flooring

Flooring Type		EN 13845/ EN 13553	Safety flooring
Classification for use		EN 685	34 & 43
Slip Resistance		TRRL EN 13845 EN 13893 DIN 51130	> 36 ESf DS R10
Thickness		EN 428	2.0 mm
Flexibility		EN 435	Pass
Wear Layer			2 mm
Weight		EN 430	2.4 kg/m ²
Roll Dimensions		EN 426	2 m x 20 m = 40 m ²
Light Fastness		EN20105-B02	>6
Sound Insulation		ISO 140-8	5 dB
Wear Resistance		EN 13845 EN 660-2	Group T
Indentation		EN 433	< 0.10mm
Fire Performance		EN 13501-1 EN ISO 9239-1 EN ISO 11925-2	Class Bfl si >8kW/m ² Pass
Chemical Resistance		EN 423	Good
Castor Chair Abrasion		EN 425	Pass
Under floor heating		EN 12667	Suitable
Electrical Behaviours		EN1815 EN 1081	< 2 kV Antistatic
VOC Emissions		prEN 15052 Section 01350 AgBB/DiBt	Low/Pass/Approved

"For wet areas where bare foot slip resistance is required such as showers and swimming pool surrounds, we recommend the use of Altro Marine™ 20 / T20.

** Caution Ketone/Aromatic Solvents, Please contact Altro for further technical advice regarding staining and chemical resistance.

Contains Biocide

Installation and Maintenance

All Installations in accordance with Altro safety flooring instructions and Local Codes of Practice. Please refer to Altro Cleaning Card for maintenance advice. Failure to install and maintain Altro flooring in accordance with installation instructions can affect its performance and slip resistance. Floors should be protected from other trades and thoroughly cleaned before handover.



For further technical information please visit www.altro.com