



altro
transflor



safety in motion

nuplex

Construction Products

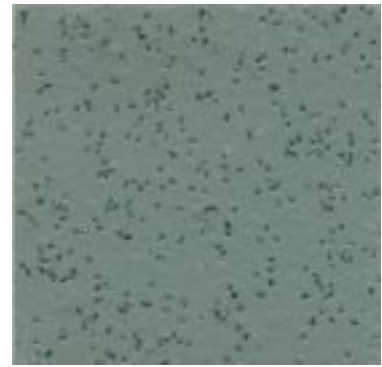
www.nuplexconstruction.co.nz
Freephone 0508-882 288

explore www.altrotransflor.com



altro

Altro Transflor™ Meta



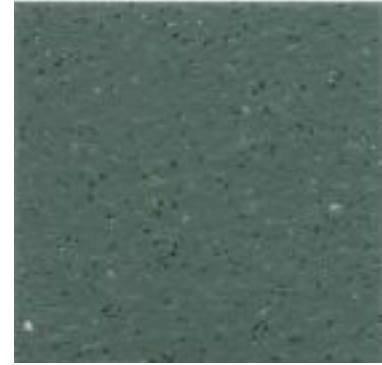
Meta - **Pewter Grey**
TFM1889 (1.8mm)
TFM2289 (2.2mm)
TFM2789 (2.7mm)
Weld Rod
WR81
Mastic Code
A1M81



Meta - **Black**
TFM18892 (1.8mm)
TFM22892 (2.2mm)
TFM27892 (2.7mm)
Weld Rod
WR100
Mastic Code
A1M100



Meta - **Storm**
TFM18903 (1.8mm)
TFM22903 (2.2mm)
TFM27903 (2.7mm)
Weld Rod
WR82
Mastic Code
A1M82



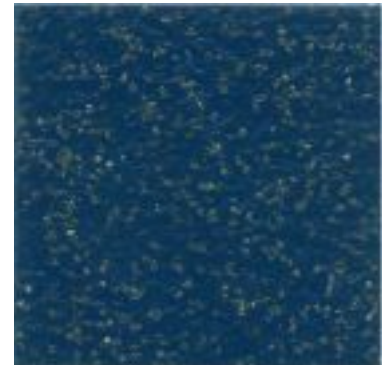
Meta - **Genome**
TFM1802 (1.8mm)
TFM2202 (2.2mm)
TFM2702 (2.7mm)
Weld Rod
WR83
Mastic Code
A1M83



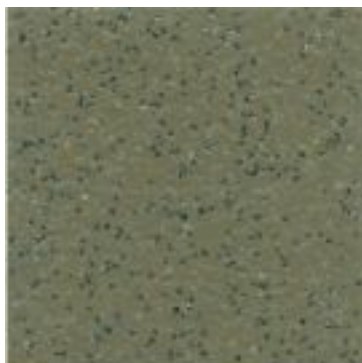
Meta - **Midnight**
TFM18421 (1.8mm)
TFM22421 (2.2mm)
TFM27421 (2.7mm)
Weld Rod
WR72
Mastic Code
A1M72



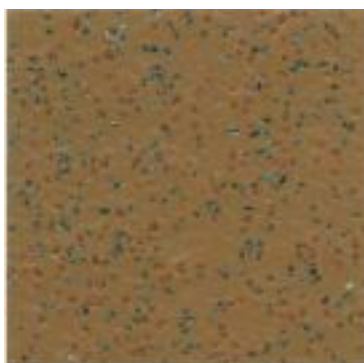
Meta - **Diablo**
TFM1875 (1.8mm)
TFM2275 (2.2mm)
TFM2775 (2.7mm)
Weld Rod
WR249
Mastic Code
A1M249



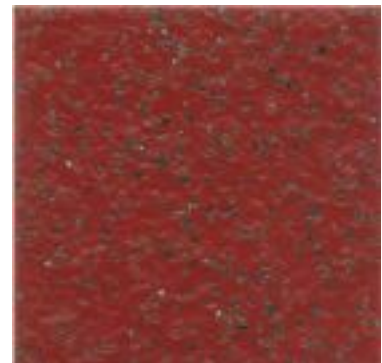
Meta - **Radial**
TFM1806 (1.8mm)
TFM2206 (2.2mm)
TFM2706 (2.7mm)
Weld Rod
WR39
Mastic Code
A1M73



Meta - **Bison**
TFM1847 (1.8mm)
TFM2247 (2.2mm)
TFM2747 (2.7mm)
Weld Rod
WR63
Mastic Code
A1M239



Meta - **Patrol**
TFM1876 (1.8mm)
TFM2276 (2.2mm)
TFM2776 (2.7mm)
Weld Rod
WR250
Mastic Code
A1M250



Meta - **Torino**
TFM1874 (1.8mm)
TFM2274 (2.2mm)
TFM2774 (2.7mm)
Weld Rod
WR248
Mastic Code
A1M238



Technical Details:

Slip Resistance

Greater than or equal to 36, low risk of slipping (UK Slip Resistance Guidelines); Pass BAM, >0.6-ASTM D2047. The construction of Altro Transflor ensures that its slip resistance is maintained throughout the life of the product.

Specification

Format		Roll
Dimensions	20m x 2m (66' x 6.58')	(EN426)
Thickness	1.8mm (.072)	
	2.2mm (.088)	(EN428)
	2.7mm (.108)	
Weight	1.8mm 2.2 kg/m ² (4.04 lb/sy)	
	2.2mm 2.6 kg/m ² (4.77 lb/sy)	(EN430)
	2.7mm 3.2 kg/m ² (5.87 lb/sy)	

Performance

Indentation	<0.1 mm	(EN433)
Dimensional stability	<0.4%	(EN434)
Flexibility	PASS 20mm mandrel	(EN435)
Color fastness	>6	(EN20105 B02: Method 3)
Flame spread	Class 2	(BS476: Part 7 1997)
	SF3	(DIN5510)
Class 1		(ASTM E648)
	Pass	FMVSS302, CMVSS302
	Pass	EC95/28
	>8K W/m ²	ISO 9239-1

Sound absorption

5dB	(ISO 140-8)
Abrasion wear	Pass (Castor chairs EN425)
Taber abrasion	Group T (EN660-2)
Classification	31-34 and 41-43 (EN685)
Curl	Pass (EN434)

Chemicals

Resists Common dilute acids, alkalis and many organic solvents
 Caution Ketone solvents
 Chemical spillages should always be removed immediately to protect the floor. For areas liable to chemical spillages, please contact your local Altro Transit representative, For more information please contact your local Altro Transit representative or visit www.altrotransflor.com

Biological

Excellent surface antibacterial activity due to bacteriostat incorporation - AltroSan.

Materials of Composition

Matrix	High quality vinyl
Inclusions	Aluminum oxide granules - throughout wear layer, silicon carbide - base colored Quartz in surface layer with additional colored chips in the Altro Transflor Chroma range
Structural support	Reinforced polyester cellulose scrim
Backing	Polyester cellulose
Optional backing	Polyester felt textured backing (please refer to Altro supplier)

Recommended Cleaning Methods

Technical advances to Altro safety floors significantly improve their cleaning characteristics. Refer to Altro Transflor comprehensive cleaning advice on www.altrotransflor.com

Installation and Maintenance

All installations in accordance with local standards and Altro Transflor installation instructions.

Joints	All heat welded
Subfloor and Adhesives	As recommended in Altro Transflor installation instructions or visit www.altrotransflor.com

Note: Failure to install and maintain Altro flooring in accordance with Altro Transflor installation instructions' can affect its performance and slip resistance, Floors should be protected from other trades and thoroughly cleaned before handover.

Altro Transflor Meta and Chroma are not recommended for areas where lighted cigarette ends are likely to be left or trodden into the floor.

Color choice

The color of Altro Transflor should be chosen with expected traffic conditions in mind. If in doubt please contact your Altro Transflor representative,



www.nuplexconstruction.co.nz
 Freephone 0508-882 288

Altro Transflor™ Meta
 Altro Transflor™ Chroma