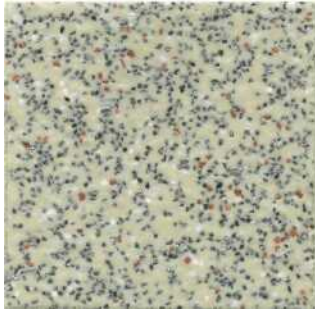


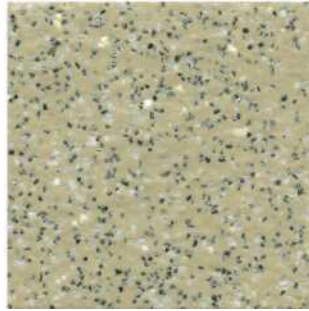


# High Performance Safety Flooring

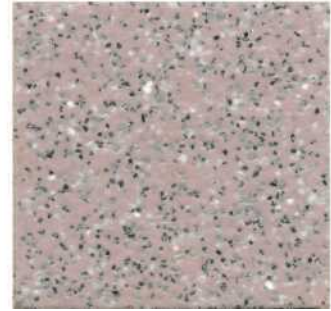
Altro D25



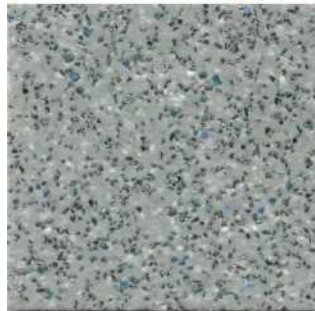
Bone D25215



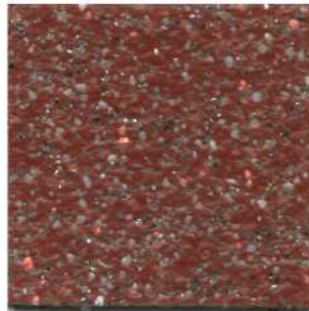
Biscuit D25904



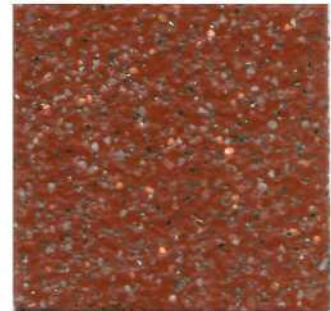
Rosa D25905



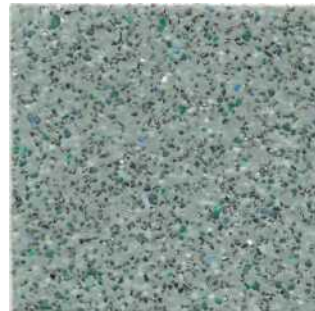
Fog D25153



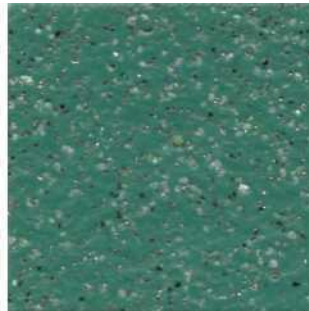
Victoria D25908



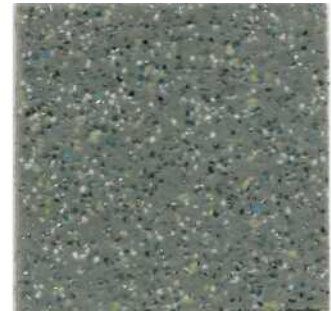
Rust D25907



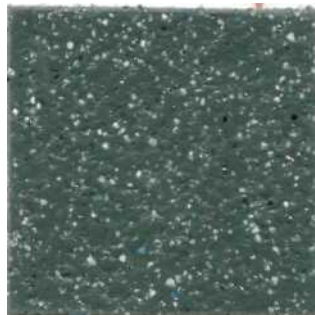
Skyline D25332



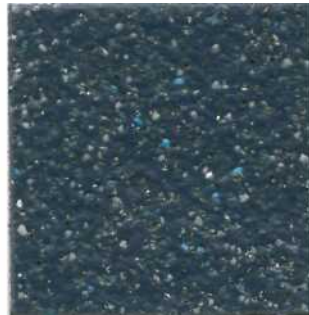
Teal D25906



Storm D25903



Midnight D25421



Twilight D25910



Jet D2501



N.B. Exact colour match with samples cannot be guaranteed.



HIGH PERFORMANCE FLOORING



# High Performance Safety Flooring

## Altro D25

Guide to uses: A highly decorative yet practical safety flooring for medium to high traffic areas.

<b>TOTAL THICKNESS:</b>	2.5mm	EN428
<b>ROLL LENGTH:</b>	20m	EN426
<b>ROLL WIDTH:</b>	2.0m	EN426
<b>WEIGHT:</b>	3.2kg/m <sup>2</sup>	EN430

**CONSTRUCTION:** Altro unique construction.

We list below a number of certificates now available. Should you require test certificates for specific grades, please consult your local Altro representative.

**FIRE RESISTANCE:** (UK) BS 476 Part 7  
(Germany) DIN 4102 Part 14  
(US) ASTM E 648  
(Scandinavia) NORD TEST 007

**ABRASION RESISTANCE:** Taber Abrasion Test  
Tested in accordance with EN425, prEN660-2.

**SLIP RESISTANCE:** Provides good wet and dry static and dynamic slip resistance under eg: RRL Pendulum, Tortus, James ASTM D 2047, BIA DIN 51130 R10 Test conditions. Retains slip resistance throughout its entire life due to its unique construction.

**WEAR RESISTANCE:** The unique Altro construction ensures lifelong slip resistance. Under normal conditions, product life of 15-20 years or more is not uncommon. Tests performed in accordance with EN649 classified Altro D25 as Class 34 (very general building use) and Class 43 (heavy industrial use).

**CHEMICAL RESISTANCE:** DIN 51958. Excellent resistance to chemicals and staining. A copy of the Altro Guide to Chemical Resistance is available from your Altro Distributor.

**Easyclean TECHNOLOGY** **INSTALLATION AND MAINTENANCE:** Altro takes care to provide detailed information to ensure that its products give utmost satisfaction - from the installation stage right through the many years of use they will provide.

Obtaining a copy of our maintenance and/or installation guide is recommended. This is available free of charge, together with a checklist of specific errors to be avoided.

Altro safety flooring is not recommended for areas where lighted cigarette ends are likely to be left or trodden into the floor, where solvents (such as acetone) are in regular use, where severe polymer migration can occur (e.g. car showrooms, rubber tyres used on trolleys) or where organic dyes or floor cleaners containing pine oil are used.

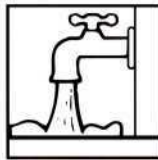
The original vinyl safety flooring of Altro construction for lifelong slip resistance, wear resistance and bacteriostatic resistance.

For typical applications see our technical literature.

The only 'all the way through' safety floorings. Contains a lifelong bacteriostat.



Slip Resistant



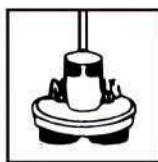
Impervious



Chemical Resistant



Durable



Hygienic



Point Loading

### Typical Applications

APPLICATION	X20/D25					APPLICATION	X20/D25				
	X40	X20/D25	IP23	IP20	T20		X40	X20/D25	IP23	IP20	T20
ABLUTION BLOCKS	•	•	•	•	•	KITCHENS - 400+ meals daily		•			
AMBULANCES			•	•	•	LABORATORIES			•	•	•
AREAS OF FREQUENT SPILLAGE		•				LAUNDRIES		•			
ART GALLERIES			•	•	•	LIGHT ENGINEERING			•	•	
AUTOPSY ROOMS			•	•		INDUSTRIAL USE		•			
BAKERIES/WITHOUT RACK OVENS	•	•				MACHINE SHOPS - Education		•	•	•	
BAR SERVERIES - Wet		•				MEAT CUTTING ROOMS		•			
BAR SERVERIES			•	•	•	METAL WALKWAYS			•	•	
BATHROOMS			•	•	•	MEZZANINE FLOORS			•	•	•
BOUTIQUES			•	•	•	MORTUARIES			•	•	
BUTTER & CHEESE PACKING		•				MUSEUMS			•	•	•
BUSES			•	•	•	PATIENT TREATMENT ROOMS			•	•	•
CHANGING ROOMS	•	•	•	•	•	PHARMACEUTICAL PRODUCTION	•	•	•		
CHEMICAL PROCESSING	•	•	•	•		POOL SURROUNDS					•
CIRCULATION AREAS			•	•	•	PRINT ROOMS			•	•	
CORRIDORS - Medium Traffic				•	•	PUBLIC TRANSPORT			•	•	•
CORRIDORS - Heavy Traffic			•	•		RAMPs - Medium Traffic			•	•	•
CRAFT AND CDT ROOMS			•	•		RAMPs - Heavy Traffic		•	•		
CRAFT ROOMS - Heavy Duty		•				SERVICE AREAS			•	•	•
FAST FOOD KITCHENS		•				SHOPS			•	•	•
FOOD PREPARATION AREAS		•	•	•	•	SHOWERS/SHOWER AREAS					•
FOOD PRODUCTION - Industrial	•	•				STAIRS - Medium Traffic			•	•	•
FOOD SERVICE AREAS			•	•	•	STAIRS - Heavy Traffic			•	•	
FOOD STORAGE			•	•	•	STORE ROOMS			•	•	•
FRESH FOOD SERVERIES		•	•	•	•	SUPERMARKETS			•	•	
GERIATRIC WARDS			•	•	•	SWIMMING POOLS SURROUNDS					•
HEAVY DUTY MEZZANINES	•					TOILETS			•	•	•
HEAVY DUTY TROLLEY AREAS	•					VETERINARY ROOMS			•	•	•
HYDROTHERAPY POOLS					•	WARD KITCHENS			•	•	•
JACUZZI POOLS					•	WASH BAYS			•	•	
KITCHENS - Up to 100 meals daily		•	•	•	•	WET CHEMICAL AREAS			•	•	
KITCHENS - Up to 400 meals daily		•	•			WORKS OFFICES/ENTRANCES			•	•	



HIGH PERFORMANCE FLOORING

AND WALLING

[www.altro.co.uk](http://www.altro.co.uk)

Altro Limited, Works Road, Letchworth, Hertfordshire SG6 1NW. Tel: (+44) 1462 480480 Fax: (+44) 1462 480010 e-mail: info@altro.co.uk  
ALTRO and Altro are all trademarks of Altro Limited.